

TRAWEMA®

Transportable Werkzeugmaschinen | Portable Machine Tools

QUALITY MADE IN GERMANY

Based on decades of experience in the field of portable machine tools, TRAWEMA GmbH was founded in 2015 by owner and managing director Günter Cramer. Starting with a team of five, we are continuously developing to support our customers with precise, efficient machines for on-site machining. The TRAWEMA team currently consists of nine experienced employees who drive the development of many innovative engineering solutions and are always available to our customers with advice and support.

*„It's not about doing quick business –
it's about honest and stable business relationships and collaborations!“*

CUSTOMER SATISFACTION IS OUR GREATEST CONCERN

EXPERIENCE
TEAMWORK
COMPETENCE
DEVELOPMENT
PASSION
COMMUNICATION
LOYALTY

Through many years of experience in the field of mobile machine tools, we offer our customers competent advice and solutions at the highest level of quality. We see ourselves as a partner to our customers, with whom we work in a spirit of trust and honesty.

We respond to the wishes and requirements of our customers – we are always loyal, flexible and innovative! That is why we are able to implement projects that pose a challenge in a short period of time.

The fun at work and the passion for our projects are never lost to us and so we remain customer-oriented and creative. We consciously use the different talents and experiences of our team to gain new perspectives and ideas. This is our biggest success factor.

ENVIRONMENTAL AWARENESS

Sustainable and environmentally conscious behavior is an integral part of our values. We strive to make all processes as environmentally friendly as possible. We obtain a large number of our components from selected, regional and professionally positioned partners and suppliers with whom we have been working for many years. This is not only good for smooth communication. The short distances also ensure environmentally friendly logistics.

We make the most important contribution to our environment with the quality of our products! These are characterized by longevity, efficiency and focus on the future.

QUALITY MADE IN GERMANY

WHAT WE DO

We offer a range of unique, portable tools for fast accurate on-site machining. The very best technology for the repair and maintenance of equipment is available to you. Our tools are used throughout many sectors, saving you time and money.

CONSTRUCTION & MINING

TRAWEMA equipment is widely used on components with hard to handle characteristics either on-site or in production. Our line-boring equipment repairs broken or worn-out bucket pins, while our milling equipment is used for re-machining of large surfaces.



NUCLEAR

We provide state of the art solutions for our customers. Combining mechanical components with the latest "SIEMENS AUTOMATION TECHNOLOGY." We understand the hazards involved in this sector and we endeavour to provide the safest solutions.



OIL & GAS

Where the down time is critical, TRAWEMA offers a wide range of solutions, from standard equipment with the "fastest SETUP" in mind or even bespoke solutions for those slightly more complex repairs.



PETROCHEMICAL

TRAWEMA equipment is used in a wide variety of applications for the Petrochemical sector. The main priority is keeping up with the ever-increasing standards in surface quality and tolerances. All our equipment is built with maximum tolerances and appropriate surface finishes in mind.



WIND POWER

With the world turning to more “Green Energy” the wind power sector is one of the largest concentrated sectors in the world right now. Our range of portable circular milling machines provide accurate re-machining of wind tower flanges.



SHIP BUILD & REPAIR

The TRAWEMA range of portable tools are incredibly versatile, making them ideal for use in the ship build & repair sector. Our precision-made boring bars for re-machining of stern tubes with high accuracy requirements. Stackable milling machines for those hard reach places, providing solutions for our customers where they do not have any time for “down-time.”



POWER GENERATION

Having over the years developed the knowledge and understanding of all “Power Generation” aspects, TRAWEMA prides ourselves on creating innovative solutions to assist in the maintenance/repair of turbines, valves, rotors or other operational aspects in the sector.



AVIATION

With millions of people traveling around the world aviation manufacturers now have the added pressure of keeping up with production and maintenance. Our selection of equipment is utilized throughout the sector for maintenance and repair operations. Anything from re-machining of radar tower flanges to providing accurate threads in fuselages of airplanes, the TRAWEMA team has a solution.



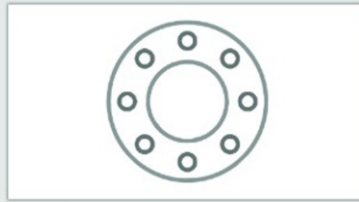
OFFSHORE

Across the offshore sector our machines are used in a wide range of activities. Using the safest machines is of utmost importance in this sector, also we take in to consideration what type of environment the machine will be working in and that is why all our parts are treated/coated using the latest products available. Minimizing down-time and increasing efficiency on our equipment.

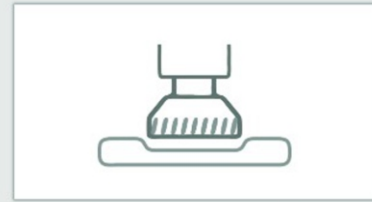




Line Boring Machines



Flange Facing Machines



Milling Machines

OUR PRODUCTS ARE DESIGNED TO MEET THE CUSTOMER'S REQUESTS!

With our machines, the on-site machining challenges can be solved quickly, precisely and efficiently. We also offer various CNC-controlled machines for a wide variety of applications.

With us you will find high-precision on-site equipment for a wide variety of applications. Maybe a standard machine does not meet your requirements? We design and manufacture customer-specific special solutions for all machining tasks. One of our many services is the upgrade or extension of existing equipment, allow us to bring your equipment to the latest technological advances available in the market place.

Are you looking for a machine and / or accessory for a limited period of time? We also rent the best suited boring, milling and flange facing machines for your specific application.

WITH US YOU GET EVERYTHING FROM ONE SOURCE!

Complete machines, individual components, accessories, retrofit or conversion kits, consumables and much more – with more than 10 decades of expertise and experience in the field of mobile machining, we always find the optimal solution.

MACHINE AND COMPONENTS

With our machines, all challenges in on-site machining can be solved precisely, efficiently and quickly.

SERVICE

Based on diverse and extensive expertise and experience, our Engineering Team can offer advice and guidance to support our clients in finding most suitable engineering solutions for the task at hand. We believe in good business relationships and so we offer technical support for troubleshooting and new and/or alternative applications of our products. We also provide maintenance and upgrade service.

RETROFIT SERVICE

Regardless of whether conversion to a different drive type, retrofitting a complete CNC control or other adjustments to the circumstances, we are happy to help you.

TRAINING

We believe that that best application of machines is achieved through design, build and use of the machines. Therefore, we offer options for training of the operators and engineers – either in our workshop or at a client' site. Through the training we ensure that the client is satisfied and confident in installing and operating the machine with its intended purpose and effectiveness. We also offer training for regular maintenance of the machines.

SPARE PARTS & REPAIR

We have a very good network of suppliers, so that we can have the required spare parts manufactured quickly and reliably. And if your machine needs to be repaired, you can fully rely on our technicians. Precision paired with speed, are our focus.

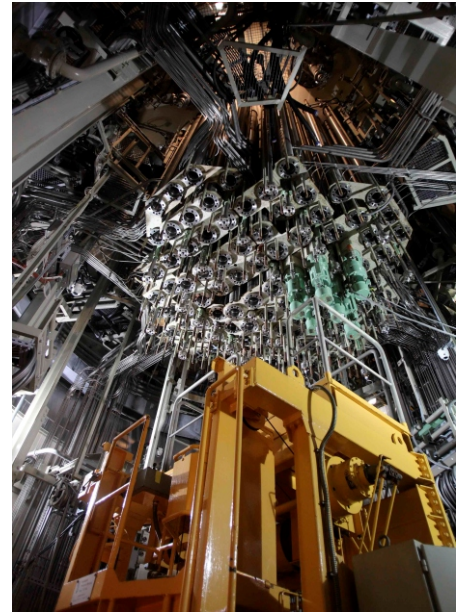
**CUSTOMER
FRIENDLY
SUPPORT
INNOVATIVE
SOLUTIONS
SATISFACTION
EFFECTIVE**

OUR KEY BUSINESS ACTIVITIES

NUCLEAR SECTOR

In recent years TRAWEMA has successfully applied its expertise in developing mobile and flexible tools for operations in complex environments to the nuclear industry - for safe, smart, and reliable dismantling operations in decommissioning of nuclear power plants (NPPs).

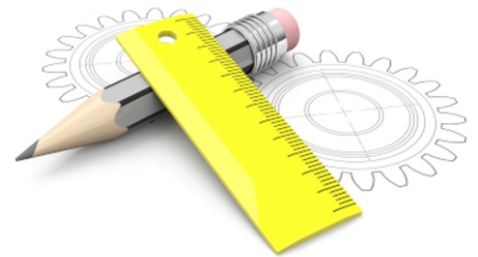
At TRAWEMA we believe that dismantling techniques should be reliable, practical, and safe. Therefore, our focus is on creating engineering solutions that successfully complete required tasks while also reduce radiological risks and are integrated with plans for management of radioactive waste. TRAWEMA applies its engineering experience to design cutting technologies with a capability to operate in constrained spaces and in radiation-controlled areas. Added value of TRAWEMA's experience is transportability of the machines. Our machines are designed with a view to be portable and easily decontaminated, transported, and installed at another site.



CUSTOM MADE SOLUTIONS FOR YOUR APPLICATION!

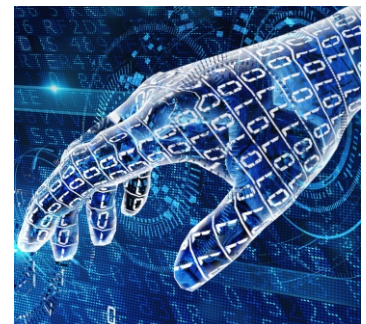
One of our strengths is special machine construction. High demanding machining tasks for which no standard machine is available are often to be adapted to the situation. We are happy to take the challenge! We develop a concept for our customers and build the right machine.

From the detection of the problem to the first use on-site – we provide the solution and support!



CNC-TECHNOLOGY - SAFETY, RELIABILITY & EFFICIENCY!

In order to implement a high level of safety, reliability and efficiency in our machines, we have been implementing modern PLC- and CNC-technology for years. Many of our machines are fully automated in order to fulfill challenging machining tasks as well as to ensure safety at the "work place" on site. We only use components from SIEMENS AG and trust in the safety technology "safety integrated".

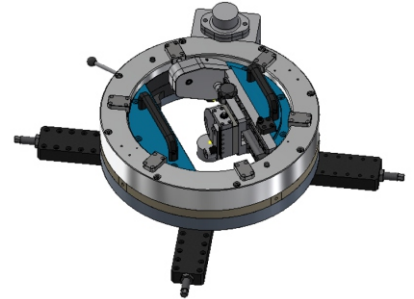


MOBILE FLANGE FACING MACHINES

TAF330

Heavy duty, robust designed OD Mount flange facer with a preloaded 4-point contact bearing for machining of flanges with high tolerances and accuracies.

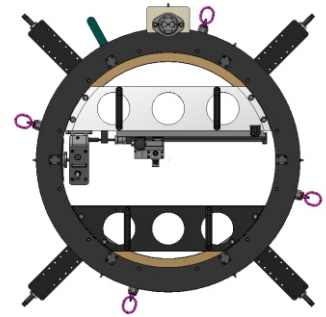
Mounting Diameter: 60mm-350mm
Boring Diameter: 0mm-330mm
Drive Options: Pneumatic or Hydraulic



TAF630

Our TAF 630 enables a wide variety of processing. Our tool slide system can be used for many applications whether it be for flat face flanges, sealing surfaces, valve flanges, shoulders and/or grooves.

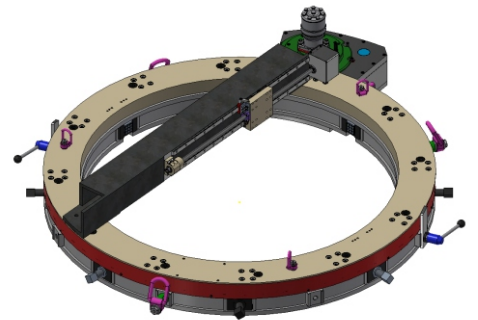
Mounting Diameter: 180mm-630mm
Boring Diameter: 0mm-630mm
Drive Options: Pneumatic or Hydraulic



TAF1300

This high accuracy machine is built using the latest technology of radial-rail system, proving to be the best in its class with little to no play in the bearing arrangement. The added benefit: the turning arm is a completely welded and internally ribbed arrangement, which combines to be a 2-axis milling machine.

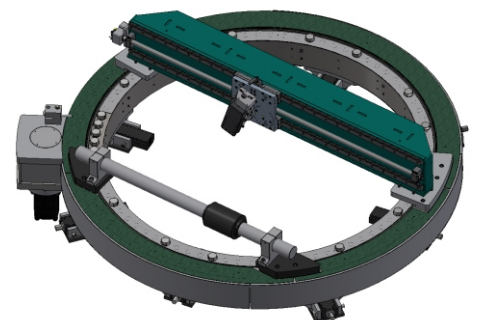
Mounting Diameter: 760mm-1270mm
Boring Diameter: 0mm-1270mm
Drive Options: Pneumatic or Hydraulic



TAF1800

Externally mounted machine for facing, grooving and milling operations! This machine is perfect for those difficult applications that require a strong and quick material removal machine.

Mounting Diameter: 1250mm-1800mm
Boring Diameter: 0mm-1800mm
Drive Options: Pneumatic or Hydraulic

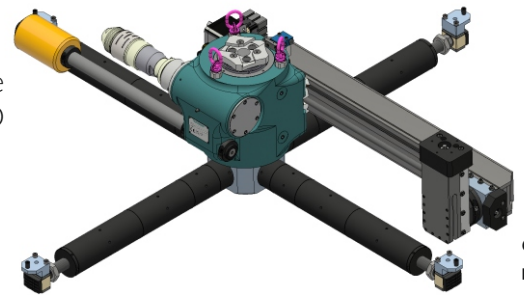


MOBILE FLANGE FACING MACHINES

TFD1500

A universal machine that is designed to fit in small spaces allowing the operator to easily setup and operate. Can be configured in either ID, OD or both. This machine quickly repairs surfaces saving time and money.

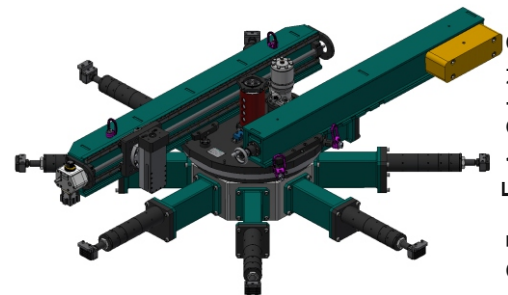
Clamping Diameter: 295mm-1480mm
Machining Diameter: 300mm-1500mm
Drive Options: Pneumatic or Hydraulic



TFD2000

Robust and versatile this machine can perform both facing and milling of flanges. Easy to setup and operate; the feed is variably adjustable.

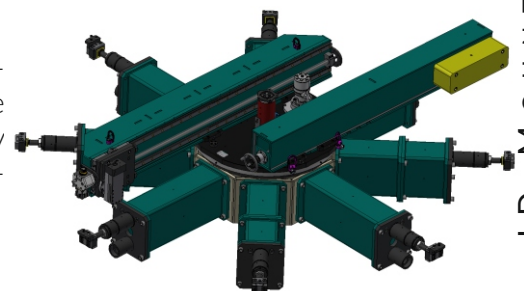
Clamping Diameter: 720mm-1900mm
Machining Diameter: 735mm-2050mm
Drive Options: Servo-Electric, Pneumatic or Hydraulic



TFD3000

This high accuracy machine is built using the latest technology of radial-rail system, proving to be the best in its class with little to no play in the bearing arrangement. The added benefit: the turning arm is a completely welded and internally ribbed arrangement, which combines to be a 2-axis turning machine.

Mounting Diameter: Ø1100mm-3000mm
Min Machining Diameter: Ø1000mm
Drive Options: Pneumatic, Hydraulic or CNC controlled



ID MOUNTED FLANGE FACING MACHINES

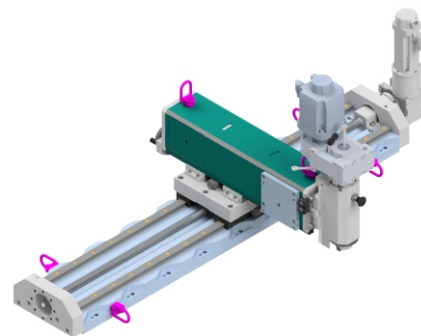
MOBILE MILLING MACHINES

3 - AXIS MILLING MACHINES

TFM1500

A universal machine that is designed to fit in small spaces allowing the operator to easily setup and operate. Can be configured in either ID, OD or both. This machine quickly repairs surfaces saving time and money.

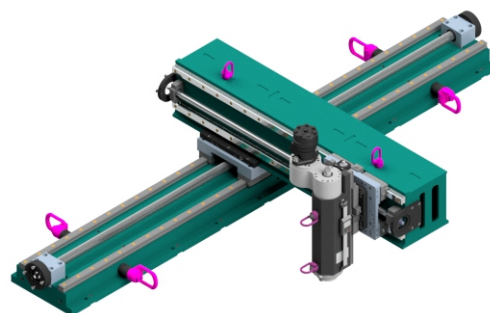
Clamping Diameter: 295mm-1480mm
Machining Diameter: 300mm-1500mm
Drive Options: Pneumatic or Hydraulic



TFM3500

Robust and versatile this machine can perform both facing and milling of flanges. Easy to setup and operate; the feed is variably adjustable.

Clamping Diameter: 720mm-1900mm
Machining Diameter: 735mm-2050mm
Drive Options: Servo-Electric, Pneumatic or Hydraulic

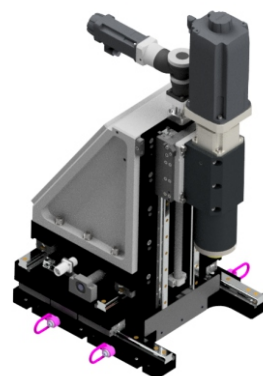


CNC THREAD CUTTING MACHINE

TGM250

3-Axis Milling Machine with CNC controlled technology. Machine capable of removing broken studs or bolts, while ensuring precision refurbishment of damaged threads. The TGM250 can also be used for all applications of a conventional 3-axis milling machine.

X-Axis Travel: 200mm
Y-Axis Travel: 200mm
Z-Axis Travel: 400mm
Spindle Size: HSK 63
Drive Options: Servo-Electric

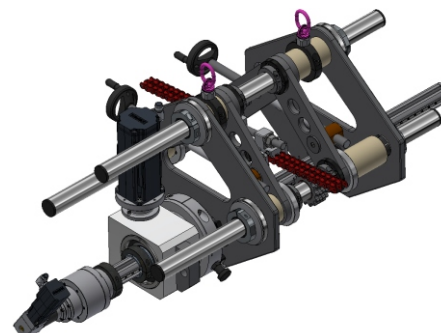


COUPLING BORING MACHINE

TKB45

A universal machine that is designed to fit in small spaces, allowing the operator to easily setup and operate. The machine features the latest technology with a universal "fit all couplings" design.

Boring Bar Diameter: 45mm
Boring Diameter: 56mm-110mm
Drive Options: Servo-Electric

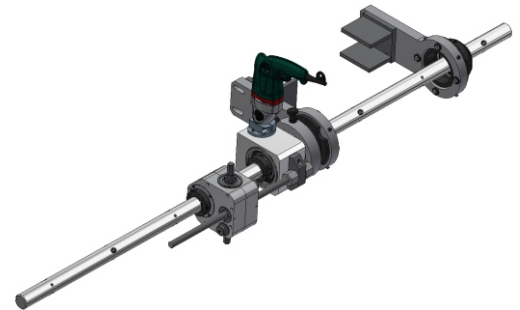


MOBILE LINE BORING MACHINES

TBM45

Powerful, lightweight and compact design for fast processing with a wide range of configurations for versatility.

Boring Bar Diameter: 45mm
Boring Diameter: 50mm-350mm
Drive Options: Electric, Pneumatic or Hydraulic



TBM57

Most common machine in the market place, this versatile, precision machine is fast and easy to setup.

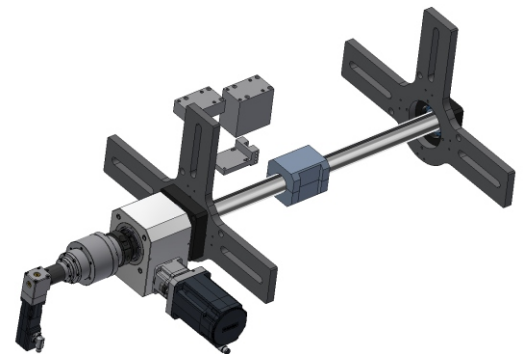
Boring Bar Diameter: 57.15mm (2 1/4") or 60mm
Boring Diameter: 64mm-450mm
Optional Diameter: 50mm-600mm
Drive Options: Electric, Pneumatic or Hydraulic



TBM70

The smallest in our fleet of traveling tool carrier, this machine has the capacity for the boring bars to be extended using our unique coupling assembly.

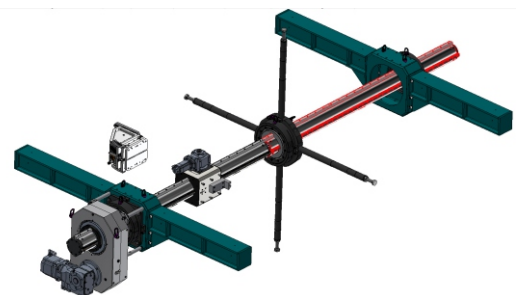
Boring Bar Diameter: 70mm
Boring Diameter: 180mm-650mm
Optional Diameter: 180mm-850mm
Drive Options: Electric, Pneumatic or Hydraulic



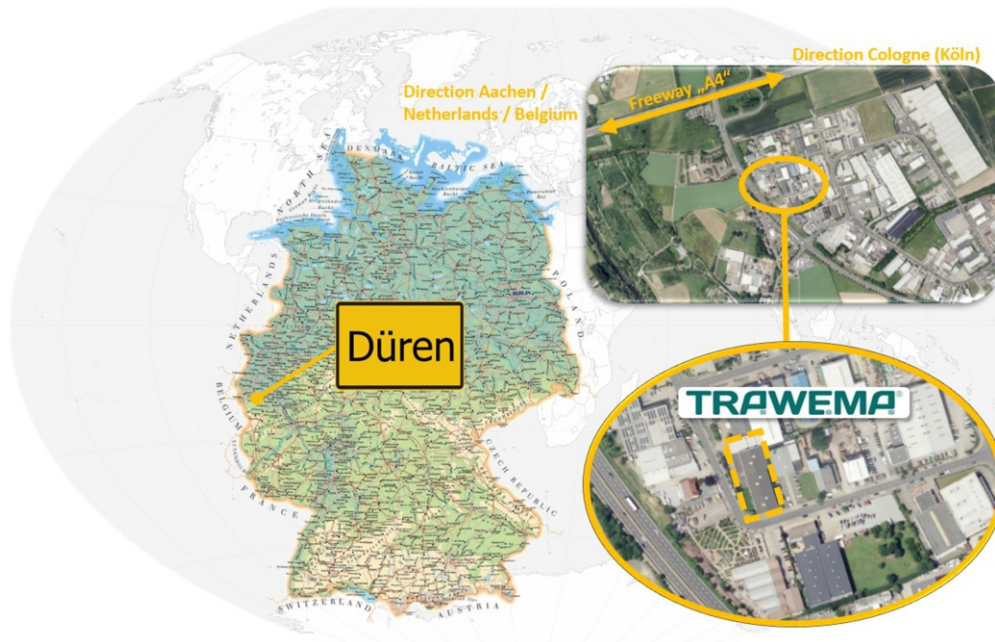
TBM200

The largest traveling tool carrier machine we have, also features modular capabilities with the boring bars being able to extend for those longer applications.

Boring Bar Diameter: 200mm
Boring Diameter: 800mm-3050mm
Drive Options: Electric, Pneumatic or Hydraulic



WHERE WE ARE



We are located in the very western part of Germany, close to the border with the Netherlands and Belgium just off the motorway „A4“.

Cologne Main Station, with ICE connections to all major cities in Germany and also Amsterdam, Brussels, Paris, Zurich and Wien, is reached in 30 min by train.

Cologne/Bonn Airport (CGN) is just a 40 min. drive or a 60 min. train ride from us.

It takes an hour to reach Düsseldorf Airport (DUS).

CALL
PHONE
COMMUNICATION
LETTER
EMAIL
ASSISTANCE
MEETING



Location

Otto-Brenner-Straße 16
52353 Düren
GERMANY



Email

info@trawema.com



Phone

+49 (0) 2421 9908990